

PROJECT ADVISORY COMMITTEE

The Project Advisory Committee (PAC) was formed to advise the designers and to solicit input from the community for this project. The organizations included in the PAC were selected for their interest in the US 3 / NH 25 Corridor in Meredith. Each organization selected their representative(s) for the PAC.

Meredith Transp. Advisory Task Force
Fred Hatch
Herb Vadney
Roger Nash

Meredith Board of Selectmen
Frank Michel/Chuck Palm

Meredith Planning Board
William Bayard

Meredith Conservation Commission
Bob LeCount

Greater Meredith Program
Rusty McLearn

Meredith Chamber of Commerce
Linda Johnson

Meredith Historical Society
Fred Hatch

Latchkey Group
Chris Williams

Meredith Superintendent of Schools
Dr. Philip McCormack

Town of Meredith
Carol Granfield, Town Manager
John Edgar, Community Development Director
Michael Faller, Public Works Director
Kevin Morrow, Police Chief
Ken Jones, Fire Chief

Meredith Citizen Representatives
John Moulton
Sandra Sullivan
Warren Clark
Ken Renoux

Lakes Region Planning Commission
William Bayard
Michael Izard

City of Laconia

Town of Moultonborough
Joanne Coppinger

Town of Holderness
Robert Snelling

Town of Center Harbor

Town of New Hampton

NH Dept of Environmental Services
Tim Drew

NH Department of Transportation
Mark Morrill, District 3

NH Fish & Game

Federal Highway Administration
Jamie Sikora

US Environmental Protection Agency

Trish Garrigan

US Army Corps of Engineers
Rich Roach



Saturday, August 16, 2008
9:00 a.m. - 1:00 p.m.

Tuesday, August 19, 2008
1:00 p.m. - 4:00 p.m.
6:00 p.m. - 9:00 p.m.

Meredith Community Center
One Circle Drive

Hope to see you there!

PROJECT CONTACT INFORMATION

New Hampshire DOT Contact
James A. Marshall, P.E.
Project Manager
NH Department of Transportation
John O. Morton Building
P.O. Box 483, 7 Hazen Drive
Concord, NH 03302-0483
Phone (603) 271-6472
Fax (603) 271-8093
Email: JAMarshall@dot.state.nh.us

Project Consultant Team Contact
Gene McCarthy, P.E.
Project Manager
McFarland-Johnson, Inc.
53 Regional Drive
Concord, NH 03301
Phone: (603) 225-2978
Fax (603) 225-0095
Email: gmccarthy@mjinc.com

PROJECT WEBSITE

A project website has been developed to serve as an informational center for those interested in the progression of this project and to serve as an open forum for public comment. A comment and questions page allows members of the public to submit their comments, questions and concerns to the members of the project team. In addition, many project materials, documents, presentations, figures, and meeting minutes are posted on the site for review and general knowledge purposes.

www.meredith3-25.com

Enhancing the Route 3 and Route 25 Corridors

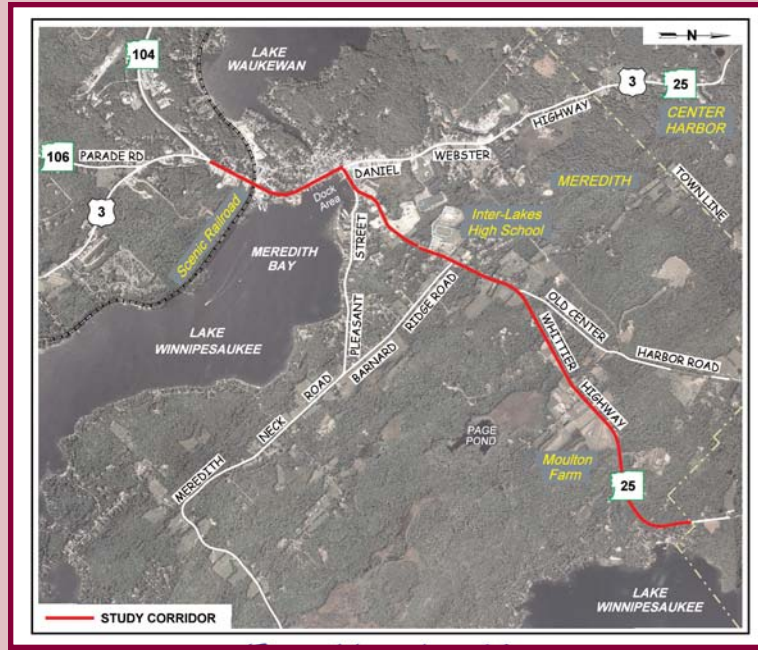


Project Location

The Meredith US Route 3/NH Route 25 Improvements Transportation Planning Study includes US Route 3 from Route 104 to Route 25 and Route 25 from US Route 3 to the Center Harbor town line, a distance of approximately 4 miles. The project has two different but well defined characters. The US Route 3 corridor and the Route 25 corridor to the base of "High School Hill" have New England Village character while the Route 25 Corridor from the High School to the town line has a Rural character. The vision for the project is to maintain these two distinct characters.

Project Goal

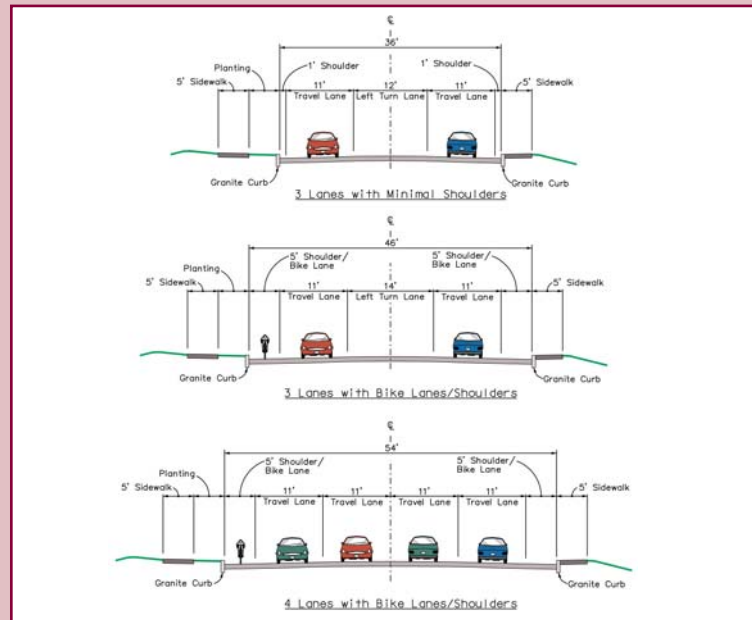
The goal of the Meredith US Route 3/NH Route 25 Improvements Transportation Planning Study is to develop a solution to the transportation needs of this part of the Lakes Region that is compatible with Meredith's vision for its future. The attraction of the Lakes Region for tourists, recreational users, and full-time and seasonal residents has resulted in increased traffic congestion along US Route 3 and NH Route 25.



Project Location Map

US Route 3 Corridor Concepts

The cross section of the US Route 3 corridor through the Meredith Village is one of the key considerations for the project. Through the alternatives development process, several cross section configurations have been developed. These range from a narrow Three-lane cross section with minimal shoulders, to the widest Four-lane cross section with shoulders to accommodate bike lanes. The figure below illustrates the difference in width of three of the cross sections under consideration.



Below are architects renderings of the US Route 3 corridor illustrating the potential aesthetic improvements that are possible along the corridor.



Alternatives Under Consideration

A Vision Statement has been developed for the project that seeks to move "traffic through in a slow, steady, safe and efficient manner" while "people will feel comfortable walking or cycling on the corridor". To meet this vision many concepts, ideas, notions, options, and alternatives have been proposed as part of the Meredith US 3/ NH 25 Improvements Project. A Range of Alternatives and Components has been developed by the Project's Advisory Committee for consideration. Below is a partial list of the Range of Alternatives and Components that are under consideration:

Village Core

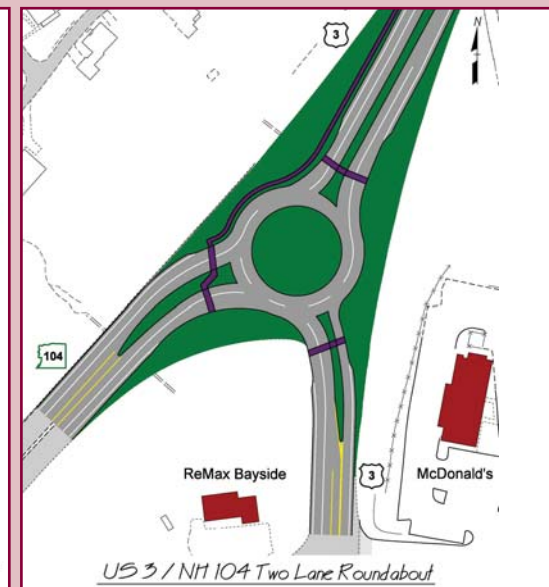
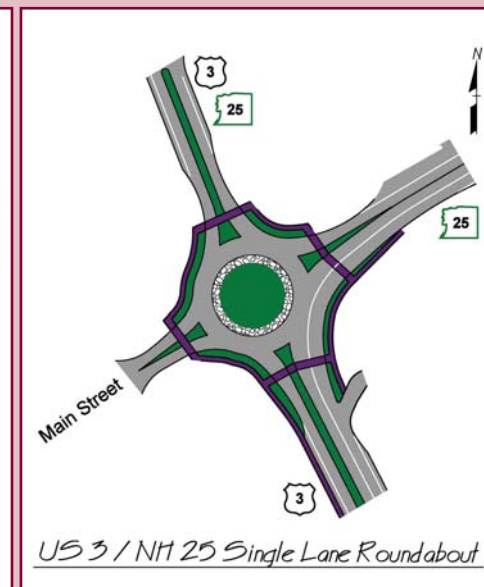
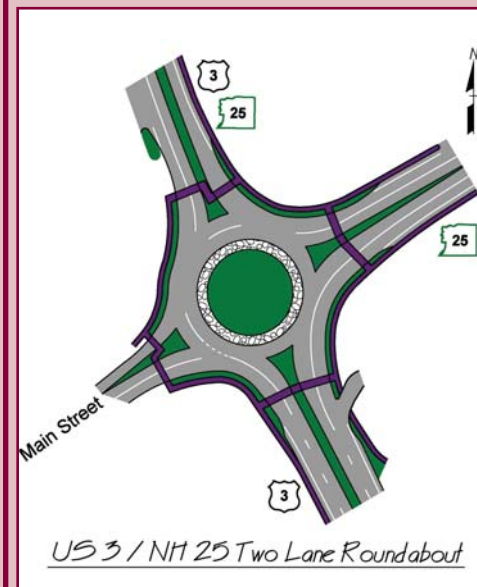
- No Build
- 3-Lanes on US Route 3
- 4-Lanes on US Route 3
- School Bypass
- Pleasant Street Bypass
- Reversible Lane on US Route 3
- 2-Lane Roundabout at Route 104/3 Intersection
- Upgraded Traffic Signal at Route 104/3 Intersection
- 2-Lane and 1-Lane Roundabouts at Route 3/25 Intersection
- Upgraded Traffic Signal at Route 3/25 Intersection
- Bike lane(s) on US Route 3
- Pedestrian Overpass or Underpass on US Route 3

Rural Route 25

- Re-define Route 25 as a slower Village roadway
- Improve sight distance at the True Road Intersection
- Shift the Old Center Harbor Road Intersection east
- Re-align Quarry Road or Beattie Road
- Upgrade Route 25 between Quarry Road and Beattie Road
- Provide a new connection between the St. Borromeo Church driveway and Patrician Shores Circle
- Eliminate certain intersections

Intersection Concepts

A key consideration of the project is the configuration of the three primary intersections; Route 104/3, Route 3/25, and Route 25/Pleasant Street. Each of these intersections has been evaluated to determine likely configurations that should be considered. Below are several configurations that have been developed for consideration.



Enhancing the Route 3 and Route 25 Corridors